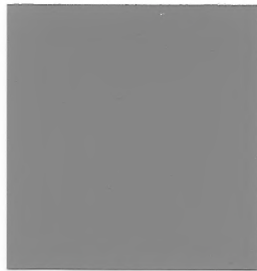


# SikaColor<sup>®</sup>-120 G

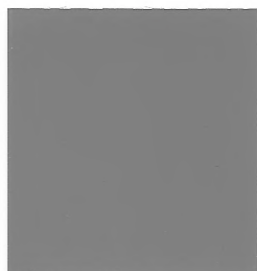
## GRANULAR INTEGRAL COLOR CHART



**C-10** Cool Gray



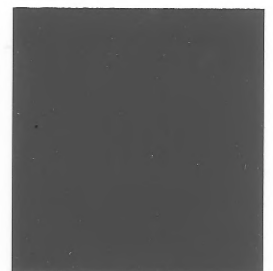
**C-284** Landmarks Gray



**C-2436** Flint



**C-24** Charcoal



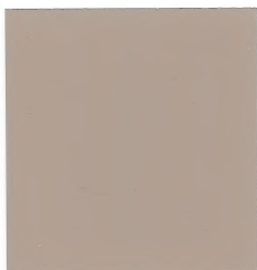
**C-34** Dark Gray



**C-2636** Pecan



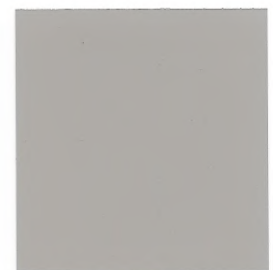
**C-21** Adobe Tan



**C-15** Coachella Sand



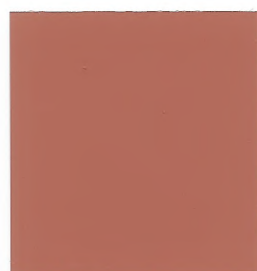
**C-11** Desert Sand



**C-16** Winter Beige



**C-36** Sorrento Red



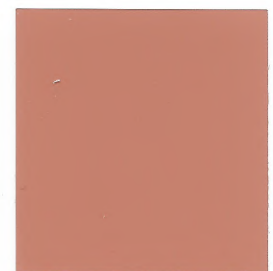
**C-3260** Etruscan Tile



**C-38** Burnt Red



**C-1530** Miami Beach Red



**C-37** Sunbaked Clay



**C-27** Westwood Brown



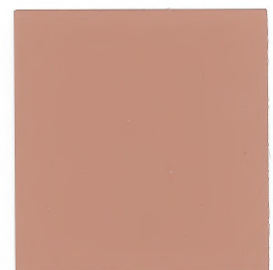
**C-2136** Durango Brown



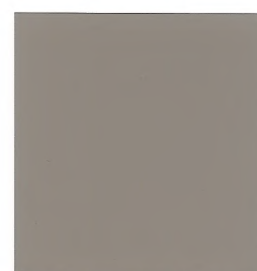
**C-30** Brownstone



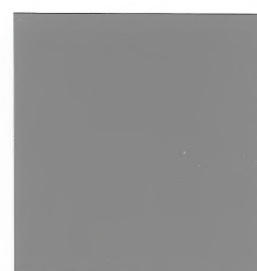
**C-359** Barcelona Brown



**C-26** Antique Cork



**C-3150** Bark



**C-14** French Gray

**Δ** Indicates High Dosage Color

Colors shown on this chart approximate the color of broom finished concrete flatwork made with a medium gray cement and cured with SikaColor®-500 Colorwax™ in the matching color or sealed with SikaCem®-100 Clear Guard®. If SikaColor®-500 Colorwax™ or SikaCem®-100 Clear Guard® are not used, the concrete color will not be as vibrant as shown.

Concrete should be batched and placed in accordance with Product Data Sheets.

Concrete color is altered by many factors, including cement and aggregate color, slump, finishing practices, and curing method. Using the contemplated materials and construction techniques, representative samples should be cast for approval, especially when exact color matching is important.



**C-3650** Navajo Red



**C-3760** Roman Tile



**C-3250** Chicory Spice



**C-3450** Musky Mulberry



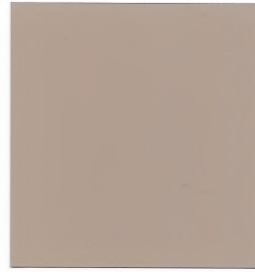
**C-2836** Smokey Plum



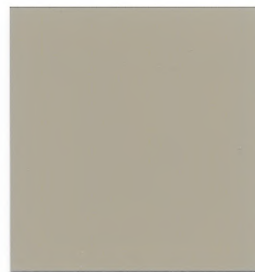
**C-3245** Golden Maize



**C-2536** Mesa Buff



**C-2736** San Diego Buff



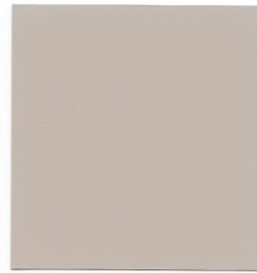
**C-2236** Fennel



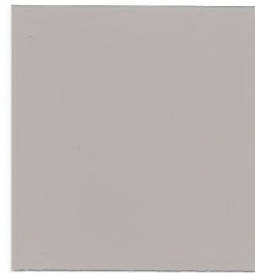
**C-2934** Covert Green Δ



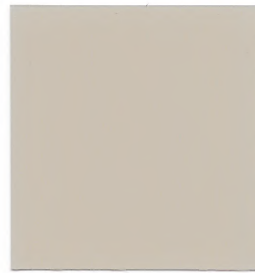
**C-25** Sombrero Buff



**C-135** Summer Beige



**C-18** Spring Beige



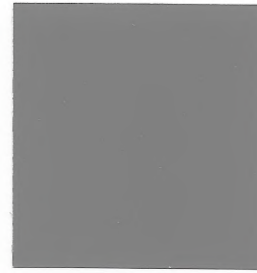
**C-235** Autumn Beige



**C-4280** Shadow Gray Δ



**C-3849** Carob Brown Δ



**C-4570** Sudan Brown Δ



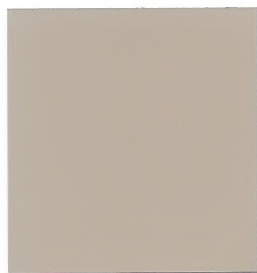
**C-3145** Carlsbad Canyon Δ



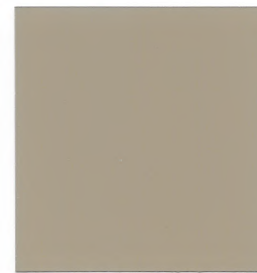
**C-6000** Shale Green Δ



**C-20** Limestone



**C-12** Mesa Beige



**C-17** Earth Stone

**SikaColor®-120 G Admixtures** for Color-Conditioned® Concrete add color that is weather resistant, UV stable, lightfast, and alkali resistant. They contain no materials that initiate, accelerate, or promote the corrosion of steel, coated metal, plastic, or rubber concrete reinforcements. SikaColor®-120 G Admixtures for Color-Conditioned® Concrete will not migrate from standing water, and can safely color concrete fountains, pools, water features, or concrete that will be polished and encounter damp or wet environments. All pigments used conform to the requirements of ASTM C 979 Pigments for Integrally Colored Concrete.